

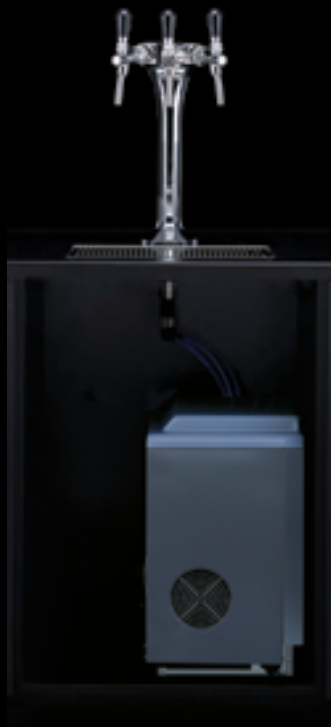
borg&
overström

U2



Unrivalled performance

Solidly practical and visually striking, this innovative range brings a high capacity refreshment solution to any Horeca environment.



Dimensions	WxDxH
Undercounter	270x240x400mm
Twin Head Tap	220x250x350mm
Dispense Height	250mm
Max power consumption	
Chilled & Sparkling	400W
Chilled & Ambient	50W

Dimensions	WxDxH
Undercounter	262x450x485mm
Triple Head Tap	220x250x470mm
Dispense Height	285mm
Max power consumption	
Chilled, Ambient & Sparkling	400W

Power requirements
Hertz 50/Volts 230
Chilled Temperature
Min 2°C /Max 11°C
Throughput litres per hour
Chilled 30/60

Key Features

- Robust, solid build quality
- Simple to operate and maintain
- Aesthetically striking
- Compact undercounter unit
- High capacity output
- Install Kit with filter included
- Available in chilled, ambient and sparkling
- Included with drip tray

Available accessories

- Sanitisation Kit
- Sparkling Refill (CO₂E290) (600g)
- CO₂ Regulator with Gauge
- Blue Tint Cups (7oz)



Water options



Chilled



Ambient



Sparkling

Configuration



Undercounter

Recommended environment



Offices



Hospitality



Leisure

Number of users



11 – 25



25+

u2 Models

Direct Chill, Complete Undercounter System, Chilled & Ambient - 601355

Direct Chill, Complete Undercounter System, Chilled & Sparkling - 601365

Direct Chill, Complete Undercounter System, Chilled, Ambient & Sparkling - 601395

Water system



Direct Chill

Borg & Overström Direct Chill utilises innovative technology to chill water instantly. We recommend this system for more demanding environments because of its optimum dispense performance and unrivalled hygienic qualities. Superior to the gravity fed Reservoir system, Direct Chill technology chills water on demand for the ultimate drinking experience.

Phone
+44 (0)1362 695 006
Email
sales@borgandoverstrom.com

borgandoverstrom.com

Distributed by

Ref: 838145
Version: 13012015