

STORM

Bottom-Load Cooler




Crystal Mountain

STORM

Bottom-Load Cooler

Our new Bottom-Load water dispenser is the latest model in Crystal Mountain's line of coolers. The Bottom-Load means no more lifting heavy bottles, just open the front door and the bottle slides into the base of the cooler with little effort. The Storm features an easy to remove reservoir system, that takes less than a minute to change. The LED indicator tells you when it needs to be replaced. Servicing has never been easier. With its contemporary design, attractive finish, concealed faucets and easy maintenance, the Storm is sure to dazzle in any environment.



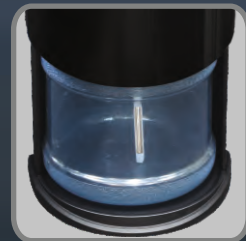
Concealed Water Outlet



Removable Drip Tray



Replaceable Reservoir System
SmartFlo™ Water Cartridge



Unique Sliding Front Door

Features

- High gloss finish, with stainless look and sliding front door
- Holds bottles sizes 11, 15 and 19 liters, 3,4, and 5 gallon bottles
- LED light over faucet area, LED – low water indicator light
- SmartFlo™ Water Cartridge – replacing is simple, quick and hygienic
- Ergonomic – higher dispense point
- Commercial grade and quality construction
- Large dispensing area for coffee pots and larger water bottles



SmartFlo™ Water Cartridge

Simple: In less than 45 seconds all water contact points are exchanged

Quick: In less than 45 seconds all water contact points are exchanged

Hygienic: All water contact points are exchanged
100% Sanitization



STORM

Bottom-Load Cooler

Performance and Specifications

General

An air-cooled water dispenser with a compressor-driven refrigeration system and a SmartFlo™ Water Cartridge for easy sanitization, for use with bottled water

Cooler Cabinet

Standard colour in black. Other colours available for high volume orders

Faucet Type

Covered mechanical style faucet system with replaceable water contact components (via SmartFlo™ Water Cartridge), and a recessed dispensing point to protect from contamination, are extra durable and add to the stylish presentation

Cold Water Tank Specifications

SmartFlo™ Water Cartridge casing with 1.6 L (0.4 gal) volume

Cold water cooling capacity of 2.8 L (0.7 gal)/hr based on 21°C (69.8°F) room temperature

Technician-adjustable cold control

Preset at factory to dispense water at temperatures from 4-10°C (39.2-50°F)

Adjustable cold control located at back of cabinet

Hot Water Tank

Stainless steel 304 casing with 1.1 L (0.3 gal) capacity

Hot water capacity of 5.5 L (1.45 gal)/hour based on 21°C (69.8°F) room temperature

Hot Water Thermostat and Heaters

Automatic thermostat set at temperature range of 76-92°C (168.8-197.6°F)

Manual thermostat reset in case of automatic thermostat failure

ON/OFF switch is located behind top of bottle access door

Compressor

Hermetically sealed reciprocating compressor

220-240VAC 50Hz

Noise (Sound Power Level): Pump:55dB; Compressor:43dB(A)

Refrigerant Type: R600a

Refrigerant Charge: 220-240VAC 18g (0.63 oz)

Dimensions & Freight Data

Product Dimensions

320mm wide x 340mm deep x 1116mm high
(12.6" wide x 13.4" deep x 43.9" high)

Product Weight: Hot & Cold:14.5kg (32.0 lb)

Product Boxed Dimensions

340mm wide x 380mm deep x 1165mm high
(13.4" wide x 15.0" deep x 45.9" high)

Product Boxed Weight: Hot & Cold: 16.2kg (35.7 lb)

20FT Container Quantity: 204 Units

40FT Container Quantity: 420 Units



All performances are tested in a controlled environment, certified by a third party. To learn more about these standards, please speak to your Crystal Mountain representative.



STORM ***Bottom-Load Cooler***

For more than 20 years Crystal Mountain has earned the reputation for producing high quality products and superior customer service



Crystal Mountain Products Limited

North American Sales Office
200 Carnegie Drive, Suite 234
St. Albert, AB, T8N 5A7 Canada
Toll Free: 800 878 6422
Tel: 1 780 454 4545
E-mail: sales@crystalcoolers.com

European Sales Office
Fence House, Fence Avenue
Macclesfield, Cheshire
United Kingdom SK10 1LT
Tel: +44(0) 1625 439 111
Fax: +44 (0) 1625 502 527
E-mail: cmeurope@crystalcoolers.com

Crystal Mountain Products Inc.

US Office / Warehouse
1000 H Taylor Station Rd
Gahanna OH 43230
Tel: (614) 454 1618
Fax: (614) 866 7765
E-mail: sales@crystalcoolers.com

Crystal Mountain International Limited

Hong Kong Sales Office
Room 610, Winfield Commercial Building
6-8a Prat Avenue, Tsimshatsui
Kowloon, Hong Kong
Tel: (852) 2368 1989
Fax: (852) 3017 6727
E-mail: cmasia@crystalcoolers.com

www.crystalcoolers.com

Crystal Mountain has a policy of continuous development and reserves the right to change specifications without notification.